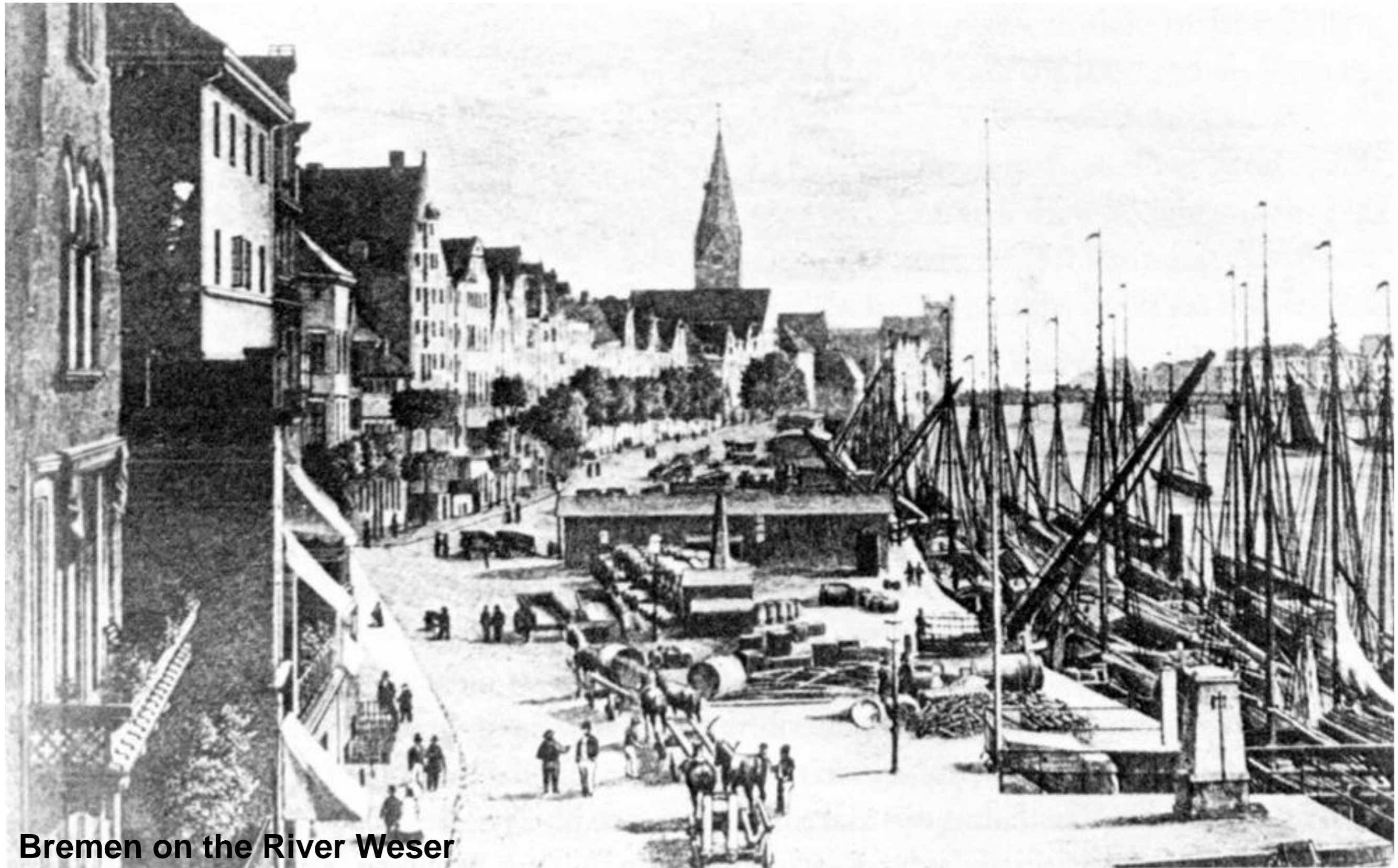




**Detthold Aden, president of BLG LOGISTICS GROUP,
at the SoS Log meeting in Milan on Dec. 3rd 2009**

www.blg.de





Bremen on the River Weser



Freeport 1

124. Bremen, Freihafen.

Perlag v. Zedler u. Pogel Darmstadt. 1865.



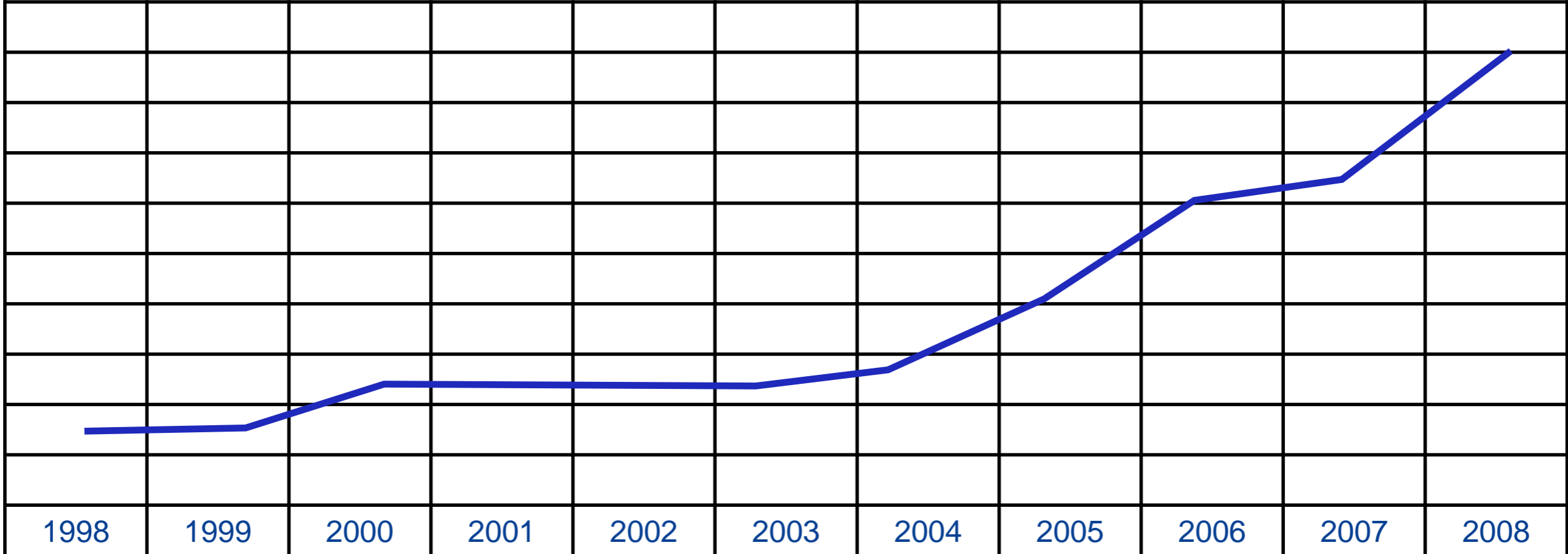
Bremerhaven 1968

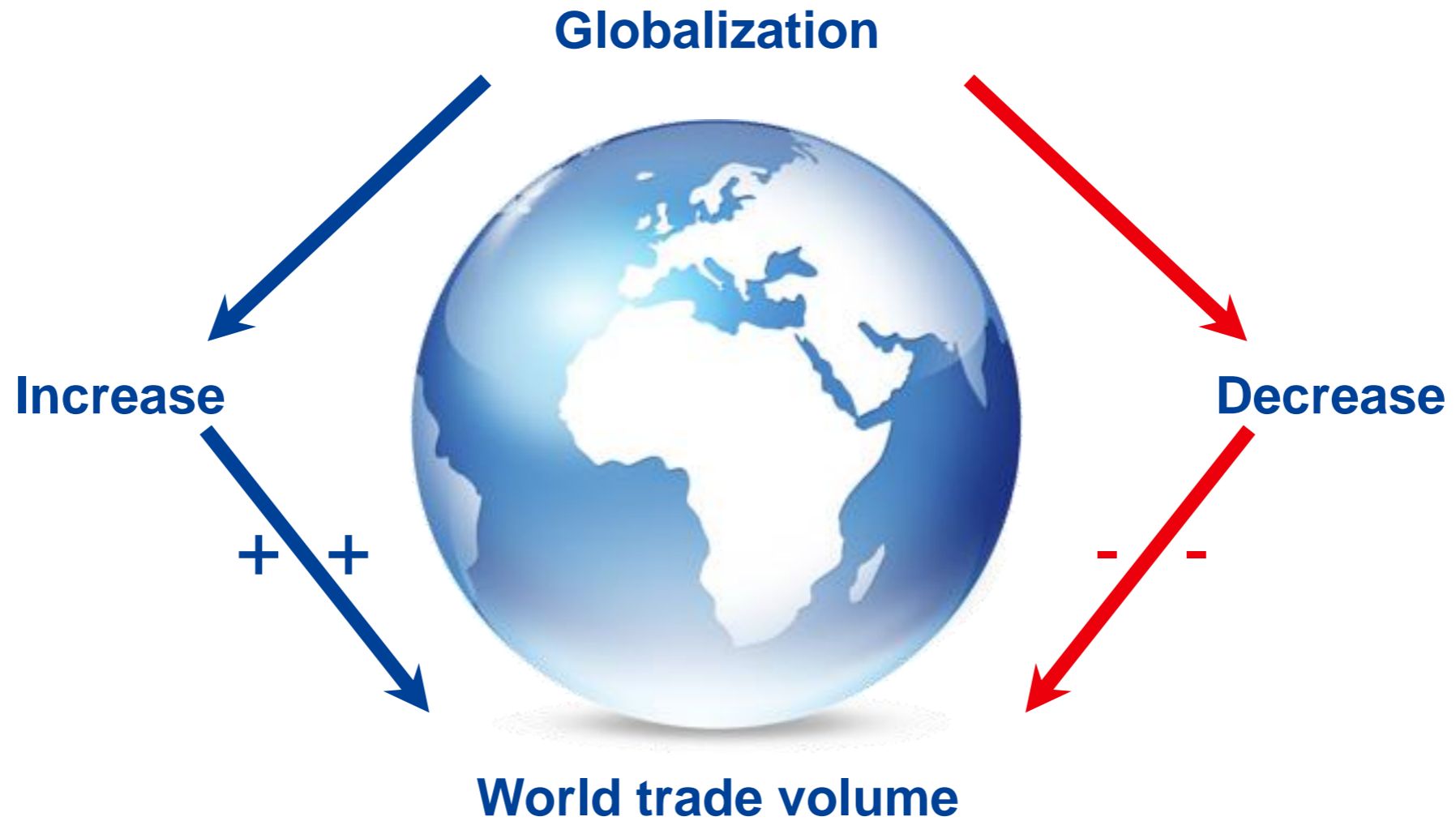


Free Hanseatic City of Bremen

Earnest before taxes from 1998 - 2008

84 million €







AUTOMOBILE

**sea & inland terminals
distribution & storage
ro/ro terminals
technical centers
intermodal transports
forwarding**



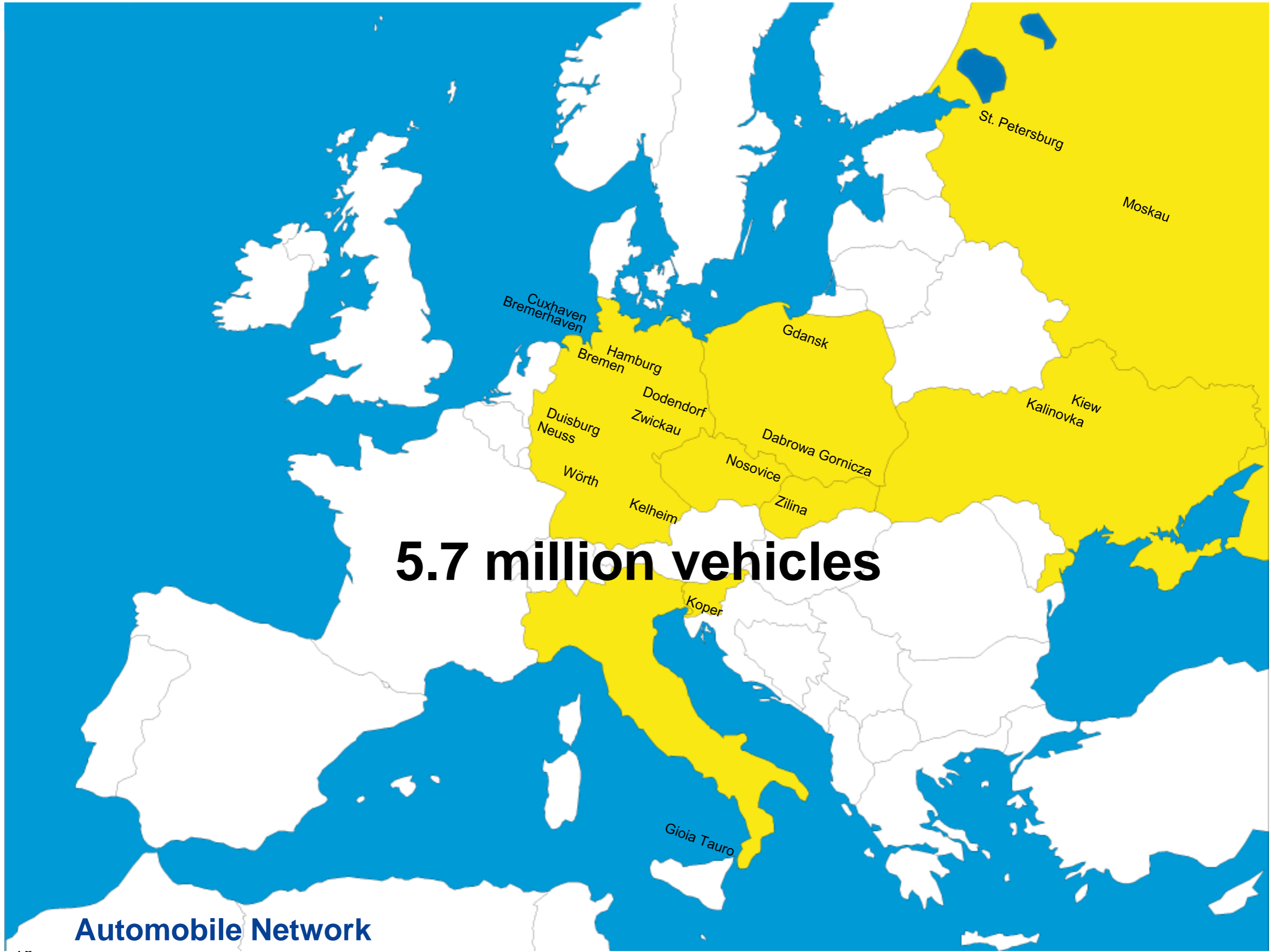
CONTRACT

**automobile parts logistics
industry- & production logistics
trade- & distribution logistics
port logistics**



CONTAINER

**terminal network
intermodal transports
cargomodal services
maintenance & repair
depots**



5.7 million vehicles

Automobile Network



2.03 million vehicles

Bremerhaven



500,000 vehicles



Technical centers

Gioia Tauro







BLG AutoRail



Automobile parts logistics



**Industry-
and production logistics**



**Trade-
and distribution logistics**



Seaport logistics



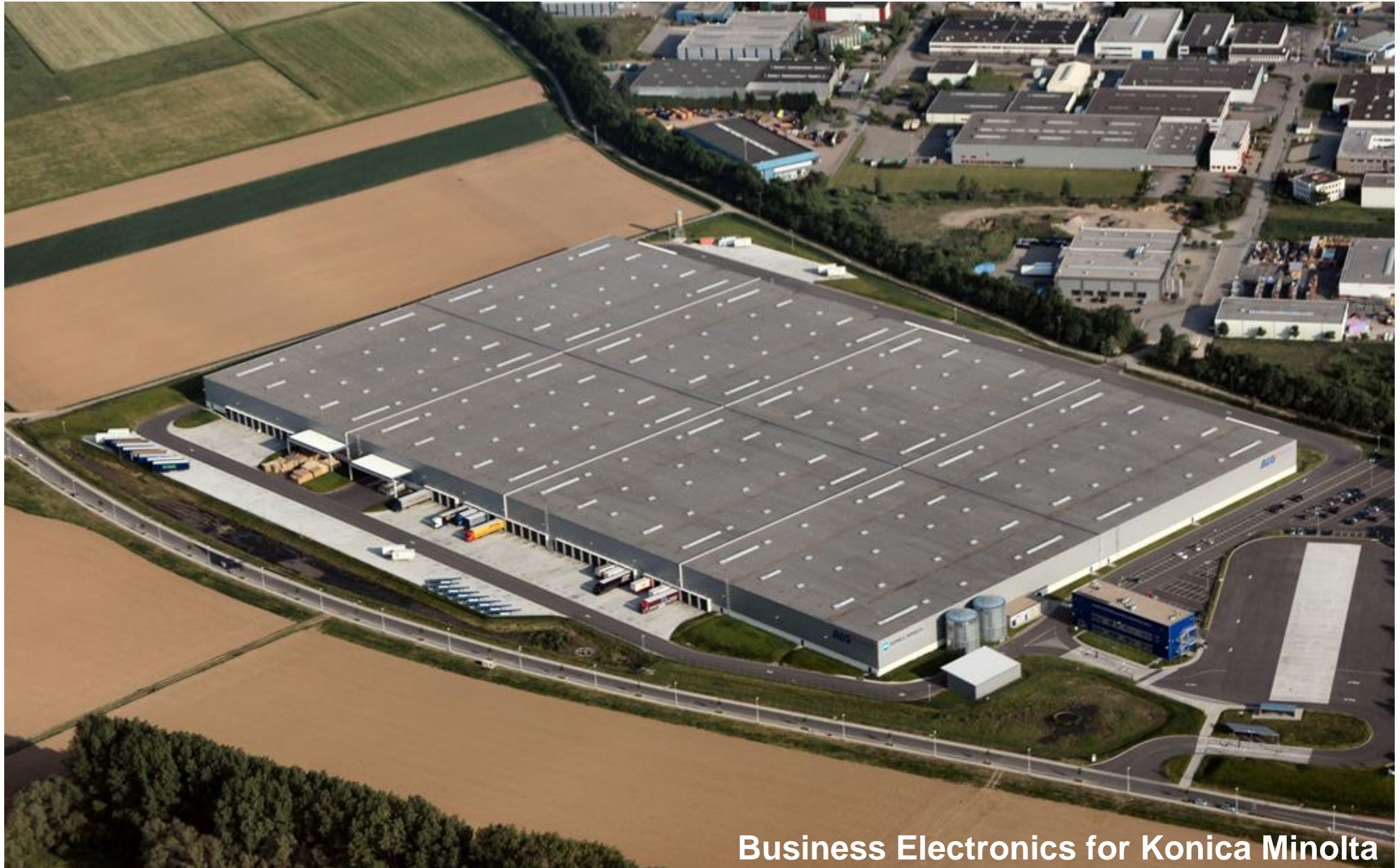
BLG High-bay warehouse in Bremen



Automotive logistics



Works logistics in the M.A.N. factory in Resende (Brazil)



Business Electronics for Konica Minolta



General cargo business at the Neustadt Port in Bremen



Coldstore in Bremerhaven

Container Network



8.19 million TEU



Ust Luga

14.195 million TEU

Hamburg
Bremerhaven
Wilhelmshaven



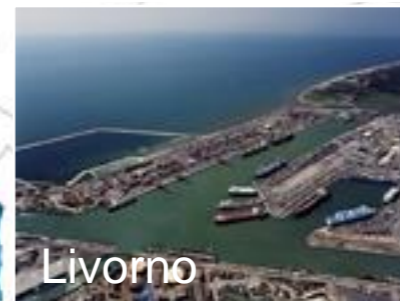
Lisbon



La Spezia



Ravenna



Livorno



Salerno

299,500 TEU



Tanger

5.7 million TEU

Cagliari
Gioia Tauro



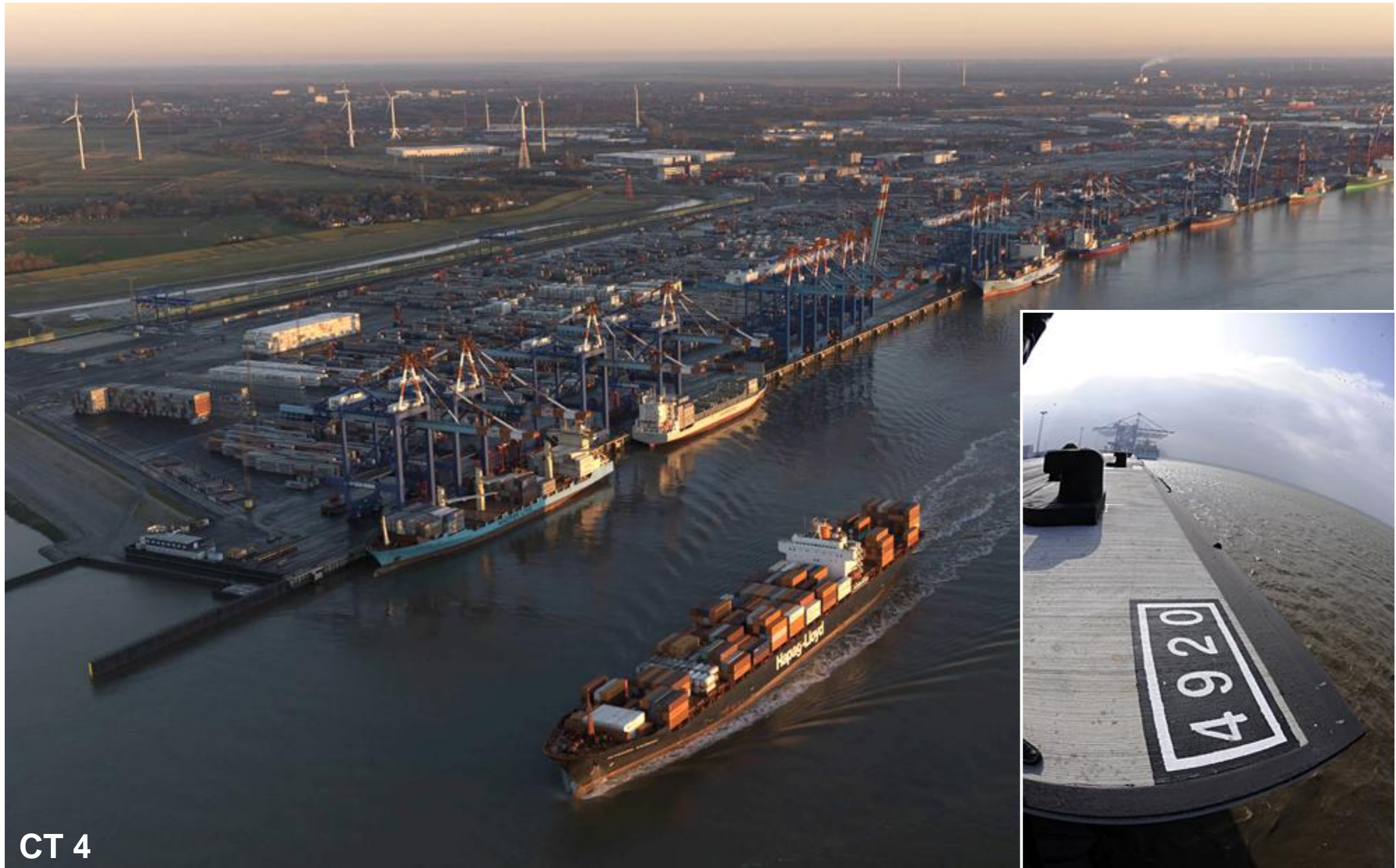
Cagliari



Gioia Tauro



JADEWESERPORT
Wilhelmshaven



CT 4

Globalization



I thank you for your attention!

BLG LOGISTICS GROUP AG & Co. KG • Präsident-Kennedy-Platz 1 • 28203 Bremen • Germany
communications@blg.de • www.blg.de

YOURS. GLOBALLY